

The Demographic Characteristics of Low Income Families and Children in Puerto Rico

Hector R. Cordero-Guzman, Ph.D.

Professor

School of Public Affairs

Baruch College

And Ph.D. Programs in Sociology and Urban Education

City University of New York

Tel. 646-660-6716

Work e-mail: hector.cordero@baruch.cuny.edu

E-mail: hcordero@aol.com

Disclaimer

The views expressed in this article do not necessarily reflect the views or policies of the Office of Planning, Research and Evaluation, Administration for Children and Families, or the U. S. Department of Health and Human Services.

The Key Questions

- What are the needs of low income families and children in Puerto Rico
- What is the range of services and programs available to low income families and children in Puerto Rico.
- What is the role of federal programs like TANF and Head Start in providing supports to low income families and children in Puerto Rico.

Subjects in the 2007-2011 American Community Survey PUMS

- **Items in the housing record include:**

- Agricultural sales
- Bedrooms
- Commercial use
- Condominium fee
- Cost of utilities and fuels
- Family income
- Fire, hazard, and flood insurance
- Food Stamps/Supplemental Nutrition Assistance Program
- Fuels used
- Grandparent/grandchild
- Household and family type
- Household income
- Household language
- Housing costs
- Kitchen facilities
- Lot size
- Meals included in rent
- Mobile home costs
- Mortgage payment
- Speaks English only or speaks English "very well."
- Plumbing facilities
- Presence and age of own children
- Property taxes
- Property value
- Rent
- Residence state
- Rooms
- Subfamilies
- Telephone
- Tenure in home
- Units in structure
- Unmarried partner
- Vacancy status
- Vehicles available
- Work
- Year householder moved into unit
- Year structure built

- **Items in the person record include:**

- Ability to speak English
- Age
- Ancestry
- Citizenship and naturalization
- Class of worker
- Commuting to work
- Earnings
- Educational attainment
- Fertility
- Grandparent/ grandchild
- Hispanic origin
- Hours worked
- Income by type
- Industry
- Language spoken at home
- Last week work status
- Marital status
- Migration
- Military
- Mobility status
- Occupation
- Place of birth
- Place of work
- Poverty
- Race
- Relationship
- School enrollment
- Sex
- Weeks worked
- Work
- Year of entry

Frequency Distributions for Total Population

Sex					
		Frequency	Percent	Valid Percent	Cumulative Percent
Valid	Male	1780778	47.9	47.9	47.9
	Female	1935949	52.1	52.1	100.0
	Total	3716727	100.0	100.0	

Marital status

		Frequency	Percent	Valid Percent	Cumulative Percent
Valid	Married	1154729	31.1	31.1	31.1
	Widowed	209340	5.6	5.6	36.7
	Divorced	394101	10.6	10.6	47.3
	Separated	95558	2.6	2.6	49.9
	Never married or under 15 years old	1862999	50.1	50.1	100.0
	Total	3716727	100.0	100.0	

Employment Status Recode

	Frequency	Percent	Valid Percent	Cumulative Percent
Valid	783981	21.1	21.1	21.1
Civilian employed, at work	1082873	29.1	29.1	50.2
Civilian employed, with a job but not at work	44096	1.2	1.2	51.4
Unemployed	241437	6.5	6.5	57.9
Armed forces, at work	1827	.0	.0	58.0
Armed forces, with a job but not at work	121	.0	.0	58.0
Not in labor force	1562392	42.0	42.0	100.0
Total	3716727	100.0	100.0	

Looking for work

		Frequency	Percent	Valid Percent	Cumulative Percent
Valid		783981	21.1	21.1	21.1
	Yes	250077	6.7	6.7	27.8
	No	1531799	41.2	41.2	69.0
	Did not report	1150870	31.0	31.0	100.0
	Total	3716727	100.0	100.0	

When last worked					
		Frequency	Percent	Valid Percent	Cumulative Percent
Valid		783981	21.1	21.1	21.1
	Within the past 12 months	1252333	33.7	33.7	54.8
	1-5 years ago	220225	5.9	5.9	60.7
	Over 5 years ago or never worked	1460188	39.3	39.3	100.0
	Total	3716727	100.0	100.0	

Weeks worked past 12 months

		Frequency	Percent	Valid Percent	Cumulative Percent
Valid		2464394	66.3	66.3	66.3
	50 to 52 weeks	983302	26.5	26.5	92.8
	48 to 49 weeks	17465	.5	.5	93.2
	40 to 47 weeks	39935	1.1	1.1	94.3
	27 to 39 weeks	60232	1.6	1.6	95.9
	14 to 26 weeks	64352	1.7	1.7	97.7
	13 weeks or less	87047	2.3	2.3	100.0
	Total	3716727	100.0	100.0	

Persons Total Income					
		Frequency	Percent	Valid Percent	Cumulative Percent
Valid	Lowest thru 0	802991	21.6	26.9	26.9
	1 to 9999	954978	25.7	32.0	58.8
	10k to 19,999	629481	16.9	21.1	79.9
	20k to 29,999	271759	7.3	9.1	89.0
	30k to 39999	147870	4.0	4.9	94.0
	40k to 49999	63053	1.7	2.1	96.1
	50k to 59999	34741	.9	1.2	97.2
	60k to 79999	40825	1.1	1.4	98.6
	80k to 99999	14730	.4	.5	99.1
	100k to 124999	2875	.1	.1	99.2
	Over 150,000	24101	.6	.8	100.0
	Total	2987404	80.4	100.0	
Missing	System	729323	19.6		
Total		3716727	100.0		

Dividing Population into 5 Groups Based on Poverty Level

Poverty Level					
		Frequency	Percent	Valid Percent	Cumulative Percent
Valid	Below 50%	939486	25.3	25.5	25.5
	In Poverty (51-100%)	730916	19.7	19.9	45.4
	Near Poverty (101-150%)	595059	16.0	16.2	61.6
	Low Income (151-200%)	433575	11.7	11.8	73.3
	Not in Poverty (over 201%)	980656	26.4	26.7	100.0
	Total	3679692	99.0	100.0	
Missing	System	37035	1.0		
Total		3716727	100.0		

Age Categories (Broad) * Poverty Level Crosstabulation

% within Age Categories							
		Poverty Level					Total
		Below 50%	In Poverty (51-100%)	Near Poverty (101-150%)	Low Income (151-200%)	Not in Poverty (over 201%)	
Age Categories (Broad)	Lo thru 15	37.8%	19.6%	13.6%	9.9%	19.1%	100.0%
	16 to 64	23.9%	18.7%	15.8%	12.1%	29.5%	100.0%
	65 and Older	15.1%	25.6%	21.2%	13.2%	24.9%	100.0%
Total		25.5%	19.9%	16.2%	11.8%	26.7%	100.0%

Age Categories (grouped) * Poverty Level Crosstabulation							
% within Age Categories							
		Poverty Level					Total
		Below 50%	In Poverty (51-100%)	Near Poverty (101-150%)	Low Income (151-200%)	Not in Poverty (over 201%)	
Age Categories (grouped)	10 to 9	39.6%	19.4%	13.2%	9.6%	18.2%	100.0%
	10 to 19	35.0%	20.1%	14.6%	10.2%	20.0%	100.0%
	20 to 29	28.2%	18.8%	15.6%	11.9%	25.6%	100.0%
	30 to 39	22.5%	17.6%	16.0%	13.1%	30.8%	100.0%
	40 to 49	21.3%	18.4%	15.6%	12.4%	32.4%	100.0%
	50 to 59	21.2%	17.8%	15.7%	11.8%	33.5%	100.0%
	60 to 69	16.1%	22.3%	18.9%	12.8%	29.9%	100.0%
	70 to 79	14.9%	26.0%	21.7%	13.4%	24.0%	100.0%
	80 to 89	16.1%	28.2%	21.1%	12.1%	22.6%	100.0%
	90 and Older	19.0%	23.9%	21.5%	13.5%	22.2%	100.0%
Total		25.5%	19.9%	16.2%	11.8%	26.7%	100.0%

Sex * Poverty Level Crosstabulation

% within Sex							
		Poverty Level					Total
		Below 50%	In Poverty (51-100%)	Near Poverty (101-150%)	Low Income (151-200%)	Not in Poverty (over 201%)	
Sex	Male	23.9%	19.9%	16.6%	12.0%	27.7%	100.0%
	Female	27.1%	19.8%	15.8%	11.6%	25.7%	100.0%
Total		25.5%	19.9%	16.2%	11.8%	26.7%	100.0%

Fertility * Poverty Level Crosstabulation

% within Fertility							
		Poverty Level					Total
		Below 50%	In Poverty (51-100%)	Near Poverty (101-150%)	Low Income (151-200%)	Not in Poverty (over 201%)	
Fertility		24.5%	20.5%	16.5%	11.8%	26.7%	100.0%
	Yes	39.1%	19.6%	11.9%	10.6%	18.8%	100.0%
	No	28.1%	18.0%	15.2%	11.8%	27.0%	100.0%
Total		25.5%	19.9%	16.2%	11.8%	26.7%	100.0%

Own child * Poverty Level Crosstabulation

% within Own child							
		Poverty Level					Total
		Below 50%	In Poverty (51-100%)	Near Poverty (101- 150%)	Low Income (151- 200%)	Not in Poverty (over 201%)	
Own child	NO	22.3%	20.2%	16.9%	12.3%	28.3%	100.0%
	YES	38.2%	18.5%	13.2%	9.8%	20.2%	100.0%
Total		25.5%	19.9%	16.2%	11.8%	26.7%	100.0%

Presence and age of own children * Poverty Level Crosstabulation							
% within Presence and age of own							
		Poverty Level					Total
		Below 50%	In Poverty (51-100%)	Near Poverty (101-150%)	Low Income (151-200%)	Not in Poverty (over 201%)	
Presence and age of own children		26.4%	19.8%	16.0%	11.6%	26.1%	100.0%
	With own children under 6 years only	33.3%	17.5%	13.8%	11.5%	23.8%	100.0%
	With own children 6 to 17 years only	28.2%	19.2%	15.9%	12.1%	24.6%	100.0%
	With own children under 6 years and 6 to 17 years	40.5%	19.0%	14.3%	9.6%	16.6%	100.0%
	No own children	21.7%	20.3%	16.9%	12.2%	29.0%	100.0%
Total		25.5%	19.9%	16.2%	11.8%	26.7%	100.0%

Marital status * Poverty Level Crosstabulation

% within Marital							
		Poverty Level					Total
		Below 50%	In Poverty (51-100%)	Near Poverty (101-150%)	Low Income (151-200%)	Not in Poverty (over 201%)	
Marital status	Married	13.1%	18.2%	17.7%	14.0%	36.9%	100.0%
	Widowed	21.0%	28.7%	19.4%	10.7%	20.2%	100.0%
	Divorced	24.0%	20.7%	16.8%	11.9%	26.5%	100.0%
	Separated	33.0%	22.0%	16.9%	9.7%	18.4%	100.0%
	Never married or under 15 years old	33.8%	19.6%	14.6%	10.6%	21.4%	100.0%
Total		25.5%	19.9%	16.2%	11.8%	26.7%	100.0%

Married -- spouse present/ spouse absent * Poverty Level Crosstabulation

% within Married - - spouse present/ spouse absent							
		Poverty Level					Total
		Below 50%	In Poverty (51-100%)	Near Poverty (101- 150%)	Low Income (151- 200%)	Not in Poverty (over 201%)	
Married -- spouse present/ spouse absent		38.0%	19.5%	13.5%	9.8%	19.1%	100.0%
	Now married, spouse present	12.3%	18.0%	17.7%	14.2%	37.7%	100.0%
	Now married, spouse absent	24.0%	21.2%	17.7%	11.6%	25.6%	100.0%
	Widowed	21.0%	28.7%	19.4%	10.7%	20.2%	100.0%
	Divorced	24.0%	20.7%	16.8%	11.9%	26.5%	100.0%
	Separated	33.0%	22.0%	16.9%	9.7%	18.4%	100.0%
	Never married	31.0%	19.7%	15.4%	11.1%	22.9%	100.0%
Total		25.5%	19.9%	16.2%	11.8%	26.7%	100.0%

Responsible for grandchildren * Poverty Level Crosstabulation							
% within Responsible for grandchildren							
	Poverty Level						Total
		Below 50%	In Poverty (51-100%)	Near Poverty (101- 150%)	Low Income (151- 200%)	Not in Poverty (over 201%)	
Responsible for grandchildren		25.5%	19.7%	16.1%	11.8%	26.9%	100.0%
	YES	29.8%	25.7%	17.9%	10.8%	15.7%	100.0%
	NO	21.7%	22.2%	19.4%	14.5%	22.2%	100.0%
Total		25.5%	19.9%	16.2%	11.8%	26.7%	100.0%

School enrollment * Poverty Level Crosstabulation

% within School enrollment							
		Poverty Level					Total
		Below 50%	In Poverty (51-100%)	Near Poverty (101-150%)	Low Income (151-200%)	Not in Poverty (over 201%)	
School enrollment		41.1%	20.4%	12.3%	8.9%	17.3%	100.0%
	No, has not attended in the last 3 months	22.2%	20.3%	17.0%	12.3%	28.3%	100.0%
	Yes, public school or public college	41.1%	21.1%	14.3%	9.5%	14.0%	100.0%
	Yes, private school or private college	14.9%	14.2%	14.8%	13.6%	42.4%	100.0%
Total		25.5%	19.9%	16.2%	11.8%	26.7%	100.0%

Grade level attending * Poverty Level Crosstabulation							
% within Grade level							
		Poverty Level					Total
		Below 50%	In Poverty (51-100%)	Near Poverty (101-150%)	Low Income (151-200%)	Not in Poverty (over 201%)	
Grade level attending		23.1%	20.3%	16.8%	12.1%	27.7%	100.0%
	Nursery school-preschool	37.5%	18.1%	13.4%	9.3%	21.6%	100.0%
	Kindergarten	37.4%	18.2%	13.3%	10.6%	20.5%	100.0%
	Grade 1	44.1%	19.5%	12.4%	8.6%	15.4%	100.0%
	Grade 2	38.8%	17.1%	13.4%	10.2%	20.5%	100.0%
	Grade 3	37.6%	20.2%	13.4%	10.4%	18.3%	100.0%
	Grade 4	34.8%	19.3%	14.7%	10.7%	20.4%	100.0%
	Grade 5	37.0%	18.2%	14.8%	9.7%	20.4%	100.0%
	Grade 6	35.0%	20.8%	13.7%	10.3%	20.3%	100.0%
	Grade 7	37.6%	19.5%	13.7%	10.3%	18.9%	100.0%
	Grade 8	36.2%	19.5%	13.7%	9.5%	21.2%	100.0%
	Grade 9	34.4%	20.4%	13.7%	11.2%	20.3%	100.0%
	Grade 10	31.9%	21.7%	16.1%	10.5%	19.8%	100.0%
	Grade 11	33.3%	18.8%	16.3%	11.8%	19.9%	100.0%
	Grade 12	32.4%	21.7%	15.5%	10.5%	19.8%	100.0%
	College undergraduate years	23.1%	18.4%	15.8%	12.8%	29.9%	100.0%
	Graduate or professional school	10.4%	6.4%	12.0%	11.2%	60.0%	100.0%
Total		25.5%	19.9%	16.2%	11.8%	26.7%	100.0%

Educational attainment * Poverty Level Crosstabulation							
% within Educational attainment							
		Poverty Level					Total
		Below 50%	In Poverty (51-100%)	Near Poverty (101-150%)	Low Income (151-200%)	Not in Poverty (over 201%)	
Educational attainment		41.1%	20.4%	12.3%	8.9%	17.3%	100.0%
	No schooling completed	40.0%	23.4%	14.7%	8.8%	13.0%	100.0%
	Nursery school-preschool	35.0%	18.8%	12.9%	10.1%	23.2%	100.0%
	Kindergarten	41.5%	18.9%	13.5%	9.9%	16.2%	100.0%
	Grade 1	40.9%	20.9%	12.9%	9.1%	16.2%	100.0%
	Grade 2	37.0%	24.3%	15.1%	9.4%	14.1%	100.0%
	Grade 3	33.2%	25.2%	17.0%	9.7%	15.0%	100.0%
	Grade 4	32.4%	24.8%	17.7%	9.6%	15.5%	100.0%
	Grade 5	34.6%	24.8%	15.6%	9.4%	15.5%	100.0%
	Grade 6	34.0%	26.9%	16.4%	9.3%	13.4%	100.0%
	Grade 7	38.0%	23.8%	16.1%	8.6%	13.5%	100.0%
	Grade 8	33.5%	24.9%	16.0%	10.1%	15.5%	100.0%
	Grade 9	33.9%	25.1%	17.0%	10.2%	13.8%	100.0%
	Grade 10	37.0%	22.7%	16.1%	9.5%	14.8%	100.0%
	Grade 11	36.0%	22.8%	16.7%	9.6%	14.9%	100.0%
	12th grade-no diploma	29.3%	23.6%	18.1%	11.7%	17.3%	100.0%
	Regular high school diploma	23.7%	22.4%	19.4%	13.4%	21.1%	100.0%
	GED or alternative credential	32.0%	22.7%	18.0%	10.4%	16.9%	100.0%
	Some college-less than 1 year	23.3%	20.2%	17.2%	12.9%	26.3%	100.0%
	1 or more yr college, no degree	18.7%	18.0%	17.7%	14.6%	31.0%	100.0%
	Associates degree	14.2%	17.2%	18.5%	15.3%	34.7%	100.0%
	Bachelors degree	6.7%	9.0%	12.9%	14.4%	56.9%	100.0%
	Masters degree	3.2%	4.5%	8.3%	11.6%	72.3%	100.0%
	Professional degree	3.4%	4.3%	4.4%	6.0%	82.0%	100.0%
	Doctorate degree	3.1%	4.5%	5.9%	5.1%	81.4%	100.0%
Total		25.5%	19.9%	16.2%	11.8%	26.7%	100.0%

English ability * Poverty Level Crosstabulation

% within English							
		Poverty Level					Total
		Below 50%	In Poverty (51-100%)	Near Poverty (101-150%)	Low Income (151-200%)	Not in Poverty (over 201%)	
English ability		33.0%	20.3%	14.4%	10.5%	21.8%	100.0%
	Very well	14.3%	12.5%	13.6%	12.0%	47.5%	100.0%
	Well	13.7%	15.1%	15.6%	13.6%	42.1%	100.0%
	Not well	19.6%	19.5%	17.8%	13.9%	29.3%	100.0%
	Not at all	34.4%	24.1%	16.9%	10.3%	14.3%	100.0%
Total		25.5%	19.9%	16.2%	11.8%	26.7%	100.0%

Employment Status Recode * Poverty Level Crosstabulation

% within
Employment
Status
Recode

		Poverty Level					Total
		Below 50%	In Poverty (51-100%)	Near Poverty (101-150%)	Low Income (151-200%)	Not in Poverty (over 201%)	
Employment Status Recode		37.8%	19.6%	13.6%	9.9%	19.1%	100.0%
	Civilian employed, at work	7.3%	14.2%	17.5%	15.8%	45.2%	100.0%
	Civilian employed, with a job but not at work	7.7%	15.6%	17.4%	14.3%	44.9%	100.0%
	Unemployed	44.6%	22.4%	13.1%	7.9%	12.1%	100.0%
	Armed forces, at work	.8%	7.3%	5.8%	13.0%	73.1%	100.0%
	Armed forces, with a job but not at work				100.0%		100.0%
	Not in labor force	29.8%	23.7%	17.0%	10.4%	19.1%	100.0%
Total		25.5%	19.9%	16.2%	11.8%	26.7%	100.0%

Class of worker * Poverty Level Crosstabulation							
% within Class of							
		Poverty Level					Total
		Below 50%	In Poverty (51-100%)	Near Poverty (101- 150%)	Low Income (151- 200%)	Not in Poverty (over 201%)	
Class of worker		33.0%	22.6%	15.9%	10.2%	18.3%	100.0%
	Employee of a private for-profit company or business, or of an individual, for wages, salary, or commissions	13.8%	17.9%	18.3%	14.4%	35.6%	100.0%
	Employee of a private not-for-profit, tax-exempt, or charitable organization	10.2%	13.6%	16.2%	15.7%	44.3%	100.0%
	Local government employee	10.4%	17.1%	20.2%	16.5%	35.8%	100.0%
	State government employee	4.2%	7.6%	13.2%	17.6%	57.5%	100.0%
	Federal government employee	7.3%	8.6%	11.6%	11.6%	60.8%	100.0%
	Self-employed in own not incorporated business, professional practice, or farm	23.9%	19.8%	14.9%	10.4%	31.0%	100.0%
	Self-employed in own incorporated business, professional practice or farm	11.6%	12.4%	15.4%	10.1%	50.5%	100.0%
	Working without pay in family business or farm	16.1%	9.6%	30.0%	13.2%	31.0%	100.0%
	Unemployed and last worked 5 years ago or earlier or never worked	55.0%	20.3%	10.0%	5.8%	8.8%	100.0%
Total		25.5%	19.9%	16.2%	11.8%	26.7%	100.0%

Employment status of parents * Poverty Level Crosstabulation							
% within Employment status of parents							
		Poverty Level					Total
		Below 50%	In Poverty (51-100%)	Near Poverty (101-150%)	Low Income (151-200%)	Not in Poverty (over 201%)	
Employment status of parents		22.0%	20.0%	16.8%	12.3%	28.8%	100.0%
	LB-Both parents in labor force	6.1%	12.3%	16.3%	18.0%	47.2%	100.0%
	LB-Father only in labor force	28.8%	28.1%	17.5%	8.7%	16.9%	100.0%
	LB-Mother only in labor force	17.8%	27.8%	17.6%	16.7%	20.1%	100.0%
	LB-Neither parent in labor force	67.7%	18.9%	6.3%	3.5%	3.6%	100.0%
	LF-Father in labor force	29.6%	32.9%	16.6%	8.5%	12.4%	100.0%
	LF-Father NILF	64.6%	18.7%	9.1%	3.2%	4.5%	100.0%
	LM-Mother in labor force	37.1%	23.1%	16.9%	10.4%	12.5%	100.0%
	LM-Mother NILF	81.5%	10.6%	4.4%	1.8%	1.7%	100.0%
Total		25.5%	19.9%	16.2%	11.8%	26.7%	100.0%

When last worked * Poverty Level Crosstabulation

% within When last							
		Poverty Level					Total
		Below 50%	In Poverty (51-100%)	Near Poverty (101- 150%)	Low Income (151- 200%)	Not in Poverty (over 201%)	
When last worked		37.8%	19.6%	13.6%	9.9%	19.1%	100.0%
	Within the past 12 months	8.8%	15.0%	17.4%	15.4%	43.3%	100.0%
	1-5 years ago	34.7%	20.7%	14.6%	9.5%	20.5%	100.0%
	Over 5 years ago or never worked	32.0%	24.1%	16.7%	10.0%	17.3%	100.0%
Total		25.5%	19.9%	16.2%	11.8%	26.7%	100.0%

Weeks worked past 12 months * Poverty Level Crosstabulation							
% within Weeks worked past							
		Poverty Level					Total
		Below 50%	In Poverty (51-100%)	Near Poverty (101-150%)	Low Income (151-200%)	Not in Poverty (over 201%)	
Weeks worked past 12 months		34.1%	22.3%	15.5%	9.9%	18.1%	100.0%
	50 to 52 weeks	4.3%	13.1%	17.7%	16.5%	48.3%	100.0%
	48 to 49 weeks	7.9%	15.0%	20.0%	17.3%	39.8%	100.0%
	40 to 47 weeks	12.1%	22.2%	19.9%	12.2%	33.6%	100.0%
	27 to 39 weeks	19.2%	25.5%	18.1%	13.0%	24.2%	100.0%
	14 to 26 weeks	28.7%	23.0%	15.4%	10.8%	22.1%	100.0%
	13 weeks or less	36.8%	20.0%	14.1%	9.0%	20.2%	100.0%
Total		25.5%	19.9%	16.2%	11.8%	26.7%	100.0%

Puma Code 00 * Poverty Level Crosstabulation

% within Puma Code 00		Poverty Level					Total
		Below 50%	In Poverty (51-100%)	Near Poverty (101-150%)	Low Income (151-200%)	Not in Poverty (over 201%)	
Puma Code	00	24.0%	20.2%	16.3%	11.9%	26.6%	100.0%
	Moca-Aguadilla	32.7%	21.5%	15.3%	11.6%	18.9%	100.0%
	Aguada	28.8%	24.4%	17.8%	10.7%	18.3%	100.0%
	Carmoy-Hatillo						
	Isabela						
	Quebradillas	26.5%	20.2%	18.3%	10.8%	24.2%	100.0%
	Arecibo	33.5%	20.8%	18.1%	10.2%	17.5%	100.0%
	Manati-Florida						
	Munoz						
	Barceloneta						
	Vega Baja-Vega	26.7%	20.9%	15.1%	11.3%	26.0%	100.0%
	Alta-Dorado						
	Toa Baja-Catano	21.6%	18.7%	16.1%	11.7%	31.8%	100.0%
	Corozal-Toa Alta	24.0%	21.5%	17.0%	12.7%	24.9%	100.0%
	Naranjo						
	Bayamon-Norte	19.3%	16.6%	15.7%	12.8%	35.6%	100.0%
	Bayamon-Sur	16.5%	18.3%	18.6%	13.8%	32.8%	100.0%
	Guaynabo	13.2%	13.7%	12.5%	10.4%	50.2%	100.0%
	San Juan-Norte	31.3%	19.6%	14.1%	8.2%	26.8%	100.0%
	San Juan-Este	28.0%	14.8%	14.6%	13.6%	29.1%	100.0%
	San Juan-Sur	16.6%	12.3%	10.6%	9.3%	51.2%	100.0%
	San Juan-Oeste	20.8%	16.6%	13.8%	11.4%	37.4%	100.0%
	Carolina	16.0%	13.7%	16.0%	14.9%	39.4%	100.0%
	Rio Grande	20.0%	22.0%	17.3%	12.7%	28.0%	100.0%
	Canovanas-Loiza						
	Naguabo-Ceiba	26.2%	19.0%	18.8%	12.7%	23.3%	100.0%
	Fajardo-Luquillo						
	Vieques-Culebra						
	Las Piedras	25.9%	20.5%	16.5%	12.3%	24.8%	100.0%
	Juncos-Humacao						
	Yabucoa-San	28.0%	23.8%	16.9%	12.1%	19.2%	100.0%
	Lorenzo-Maunabo						
	Patillas						
	Salinas-Coamo	31.5%	20.9%	17.1%	10.6%	20.0%	100.0%
	Arroyo-Guayama						
	Juana Diaz-Santa	31.9%	20.4%	17.1%	11.5%	19.0%	100.0%
	Isabel-Villalba						
	Ponce	30.7%	19.3%	14.4%	11.2%	24.4%	100.0%
	Yauco-Guanica	33.3%	24.9%	16.2%	10.8%	14.7%	100.0%
	Penuelas						
	Guayanilla						
	Lajas-Cabo Rojo	27.3%	23.4%	18.3%	12.5%	18.6%	100.0%
	San German						
	Sabana Grande						
	Mayaguez-Anasco	27.2%	22.0%	18.6%	11.8%	20.5%	100.0%
	Rincon						
	Hormigueros						
	Lares-Las Marias	35.1%	23.0%	15.8%	10.6%	15.6%	100.0%
	Maricao-San						
	Sebastian						
	Adjuntas						
	Ciales-Jayuya	33.6%	23.9%	15.8%	10.5%	16.2%	100.0%
	Utado-Orocovis						
	Barraquitas						
	Cidra-Cayey	25.9%	20.7%	16.4%	12.3%	24.8%	100.0%
	Agua Buenas						
	Aibonito-Correo						
	Caguas	19.9%	17.4%	16.0%	13.0%	33.6%	100.0%
	Guabo-Trujillo Alto	18.6%	15.5%	13.4%	11.5%	41.0%	100.0%
Total		25.5%	19.9%	16.2%	11.8%	26.7%	100.0%

		Poverty Level					Total
		Below 50%	In Poverty (51-100%)	Near Poverty (101- 150%)	Low Income (151- 200%)	Not in Poverty (over 201%)	
Puma Code	-0009	25.7%	19.8%	16.1%	11.8%	26.6%	100.0%
10	San Sebastián, Aguada, Moca, Añasco & Rincón	30.6%	25.5%	16.6%	10.8%	16.5%	100.0%
	Aguadilla, Isabela & Quebradillas	30.4%	22.1%	14.8%	10.1%	22.6%	100.0%
	Cabo Rojo, San Germán, Lajas & Sabana Grande	28.5%	22.7%	17.2%	10.1%	21.5%	100.0%
	Mayagüez, Hormigueros, Las Marías & Maricao	28.1%	16.0%	20.7%	13.4%	21.7%	100.0%
	Arecibo, Barceloneta & Florida	29.1%	24.0%	13.4%	10.0%	23.5%	100.0%
	Hatillo, Camuy, Utua & Lares	29.3%	23.8%	17.4%	13.1%	16.4%	100.0%
	Yauco, Peñuelas, Guayanilla, Adjuntas & Guánica	30.0%	23.9%	18.5%	13.3%	14.3%	100.0%
	Ponce & Jayuya	32.5%	21.9%	14.6%	11.9%	19.1%	100.0%
	Juana Díaz, Coamo, Villalba & Santa Isabel	28.9%	25.1%	16.0%	10.7%	19.4%	100.0%
	Vega Baja, Manatí, Morovis & Ciales	28.5%	19.9%	19.8%	9.0%	22.8%	100.0%
	Toa Baja & Dorado	23.8%	17.7%	13.1%	12.1%	33.3%	100.0%
	Toa Alta & Vega Alta	18.3%	16.5%	17.8%	12.5%	34.9%	100.0%
	Corozal, Naranjito, Barranquitas, Orocovis & Comerio	32.5%	25.6%	16.0%	12.5%	13.4%	100.0%
	Cayey, Cidra, Aguas Buenas & Albonito	21.7%	19.5%	22.4%	12.8%	23.6%	100.0%
	Guayama, Salinas, Arroyo, Patillas & Maunabo	31.1%	20.0%	17.0%	11.7%	20.1%	100.0%
	Bayamón-Este	17.7%	19.8%	19.8%	10.7%	31.9%	100.0%
	Bayamón-Oeste	16.8%	19.3%	17.1%	14.5%	32.3%	100.0%
	Guaynabo & Cataño	20.2%	12.0%	14.4%	8.0%	45.4%	100.0%
	San Juan- Noroeste	26.5%	17.9%	16.4%	10.1%	29.2%	100.0%
	San Juan-Este	29.0%	17.1%	14.6%	14.2%	25.1%	100.0%
	San Juan-Sur	12.7%	12.7%	11.5%	8.2%	54.9%	100.0%
	Carolina-Norte	17.5%	11.7%	13.9%	14.8%	42.0%	100.0%
	Trujillo Alto, Canóvanas, Loíza & Carolina- Sur	19.4%	17.3%	16.1%	14.2%	33.0%	100.0%
	Caguas	15.4%	22.0%	10.8%	14.4%	37.4%	100.0%
	Gurabo, San Lorenzo, Juncos & Las Piedras	23.3%	19.5%	14.9%	13.1%	29.3%	100.0%
	Rio Grande, Fajardo, Luquillo, Ceiba, Vieques & Culebra	19.5%	20.2%	20.3%	14.2%	25.8%	100.0%
	Humacao, Yabucoa & Naguabo	21.6%	30.0%	17.4%	10.0%	21.0%	100.0%
Total		25.5%	19.9%	16.2%	11.8%	26.7%	100.0%

Poorest Municipio Clusters (PUMA)

	Below 50%	In Poverty (51-100%)	Near Poverty (101-150%)	Low Income (151-200%)	Not in Poverty (over 201%)
Lares-Las Marias-Maricao-San Sebastian-Adjuntas	35.1%	23.0%	15.8%	10.6%	15.6%
Ciales-Jayuya-Utuado-Orocovis-Barranquitas	33.6%	23.9%	15.8%	10.5%	16.2%
Manati-Florida-Morovis-Barceloneta	33.5%	20.8%	18.1%	10.2%	17.5%
Yauco-Guanica-Penuelas-Guayanilla	33.3%	24.9%	16.2%	10.8%	14.7%
Moca-Aguadilla-Aguada	32.7%	21.5%	15.3%	11.6%	18.9%
Juana Diaz-Santa Isabel-Villalba	31.9%	20.4%	17.1%	11.5%	19.0%
Salinas-Coamo-Arroyo-Guayama	31.5%	20.9%	17.1%	10.6%	20.0%
San Juan-Norte	31.3%	19.6%	14.1%	8.2%	26.8%
Ponce	30.7%	19.3%	14.4%	11.2%	24.4%
Camuy-Hatillo-Isabela-Quebradillas	28.8%	24.4%	17.8%	10.7%	18.3%

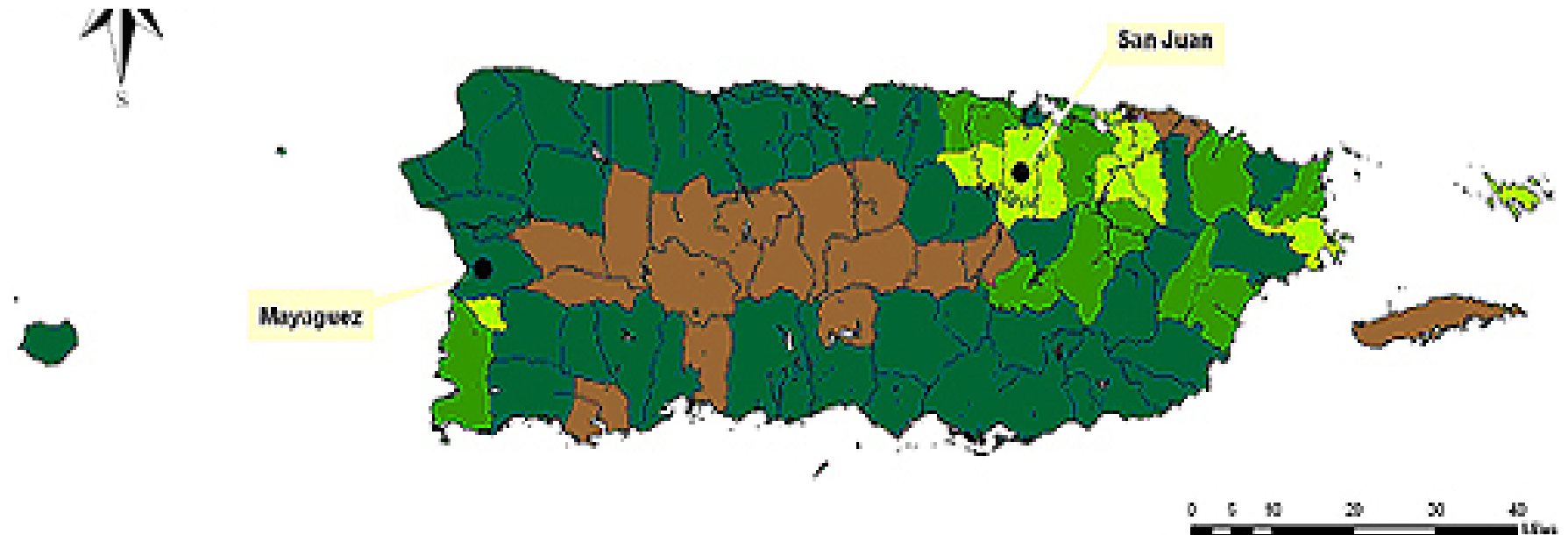
Poorest Municipio Clusters (PUMA)

	Below 50%	In Poverty (51-100%)	Near Poverty (101-150%)	Low Income (151-200%)	Not in Poverty (over 201%)
Yabucoa-San Lorenzo-Maunabo-Patillas	28.0%	23.8%	16.9%	12.1%	19.2%
San Juan-Este	28.0%	14.8%	14.6%	13.6%	29.1%
Lajas-Cabo Rojo-San German-Sabana Grande	27.3%	23.4%	18.3%	12.5%	18.6%
Mayaguez-Anasco-Rincon-Hormigueros	27.2%	22.0%	18.6%	11.8%	20.5%
Vega Baja-Vega Alta-Dorado	26.7%	20.9%	15.1%	11.3%	26.0%
Arecibo	26.5%	20.2%	18.3%	10.8%	24.2%
Naguabo-Ceiba-Fajardo-Luquillo-Vieques-Culebra	26.2%	19.0%	18.8%	12.7%	23.3%
Las Piedras-Juncos-Humacao	25.9%	20.5%	16.5%	12.3%	24.8%
Cidra-Cayey-Aguas Buenas-Aibonito-Comerio	25.9%	20.7%	16.4%	12.3%	24.8%
Corozal-Toa Alta-Naranjito	24.0%	21.5%	17.0%	12.7%	24.9%

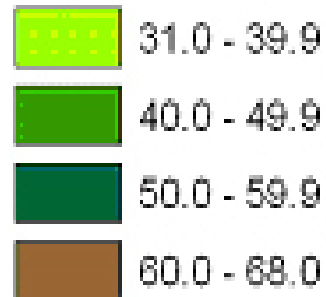
Higher Income Municipio Clusters (PUMA)

	Below 50%	In Poverty (51-100%)	Near Poverty (101-150%)	Low Income (151-200%)	Not in Poverty (over 201%)
Corozal-Toa Alta-Naranjito	24.0%	21.5%	17.0%	12.7%	24.9%
Toa Baja-Catano	21.6%	18.7%	16.1%	11.7%	31.8%
San Juan-Oeste	20.8%	16.6%	13.8%	11.4%	37.4%
Rio Grande-Canovanas-Loiza	20.0%	22.0%	17.3%	12.7%	28.0%
Caguas	19.9%	17.4%	16.0%	13.0%	33.6%
Bayamon-Norte	19.3%	16.6%	15.7%	12.8%	35.6%
Gurabo-Trujillo Alto	18.6%	15.5%	13.4%	11.5%	41.0%
San Juan-Sur	16.6%	12.3%	10.6%	9.3%	51.2%
Bayamon-Sur	16.5%	18.3%	18.6%	13.8%	32.8%
Carolina	16.0%	13.7%	16.0%	14.9%	39.4%
Guaynabo	13.2%	13.7%	12.5%	10.4%	50.2%

Poverty Rate by Municipality



Percent of Population in Poverty by Municipio



Mobility status * Poverty Level Crosstabulation

% within Mobility status							
		Poverty Level					Total
		Below 50%	In Poverty (51-100%)	Near Poverty (101-150%)	Low Income (151-200%)	Not in Poverty (over 201%)	
Mobility status		40.7%	21.4%	11.6%	9.8%	16.5%	100.0%
	Yes, same house-nonmovers	24.5%	19.8%	16.4%	12.0%	27.3%	100.0%
	No, outside US and Puerto Rico	32.5%	18.0%	11.8%	8.2%	29.5%	100.0%
	No, different house in US or Puerto Rico	36.7%	19.9%	14.5%	9.2%	19.7%	100.0%
Total		25.5%	19.9%	16.2%	11.8%	26.7%	100.0%

Citizenship * Poverty Level Crosstabulation

% within Citizenship							
		Poverty Level					Total
		Below 50%	In Poverty (51-100%)	Near Poverty (101- 150%)	Low Income (151- 200%)	Not in Poverty (over 201%)	
Citizenship	Born in the U.S	24.2%	17.9%	15.3%	11.8%	30.9%	100.0%
	Born in Puerto Rico, Guam, the U.S. Virgin Islands, or the Northern Marianas	25.9%	20.0%	16.2%	11.7%	26.2%	100.0%
	Born abroad of American parents	15.9%	11.4%	16.9%	12.9%	43.0%	100.0%
	U.S. citizen by naturalization	9.0%	16.2%	14.2%	13.1%	47.5%	100.0%
	not a citizen	24.4%	20.0%	18.5%	13.1%	24.0%	100.0%
	Total	25.5%	19.9%	16.2%	11.8%	26.7%	100.0%

Decade of entry * Poverty Level Crosstabulation

% within Decade of entry							
		Poverty Level					Total
		Below 50%	In Poverty (51-100%)	Near Poverty (101- 150%)	Low Income (151- 200%)	Not in Poverty (over 201%)	
Decade of entry		25.8%	20.0%	16.2%	11.7%	26.2%	100.0%
	Before 1950	10.2%	8.9%	9.7%	19.5%	51.7%	100.0%
	1950 – 1959	10.3%	12.9%	14.4%	12.1%	50.4%	100.0%
	1960 – 1969	10.1%	14.4%	13.9%	12.5%	49.1%	100.0%
	1970 – 1979	16.2%	16.1%	16.2%	12.9%	38.6%	100.0%
	1980 – 1989	21.7%	17.7%	18.5%	14.2%	27.9%	100.0%
	1990 – 1999	26.1%	20.4%	17.1%	11.9%	24.6%	100.0%
	2000 or later	30.9%	20.0%	14.2%	10.3%	24.7%	100.0%
Total		25.5%	19.9%	16.2%	11.8%	26.7%	100.0%

Report				
Poverty Level		PUMS Age	Persons earnings (signed)	PUMS Persons income (signed)
Below 50%	Mean	30.89	674.20	1638.07
	N	939486	646855	665722
	Std. Deviation	22.185	1960.294	2514.111
	Median	26.00	0.00	0.00
	Minimum	0	-9999	-9999
	Maximum	94	17400	21400
In Poverty (51-100%)	Mean	39.35	3062.46	5958.14
	N	730916	579443	590327
	Std. Deviation	24.174	5310.511	5274.709
	Median	38.00	0.00	6000.00
	Minimum	0	-9999	-19998
	Maximum	94	38000	38000
Near Poverty (101-150%)	Mean	40.66	5961.89	9576.82
	N	595059	489391	497590
	Std. Deviation	23.505	8072.977	7435.679
	Median	40.00	0.00	9900.00
	Minimum	0	-5500	-6800
	Maximum	94	56000	56000
Low Income (151-200%)	Mean	39.65	9210.94	13035.47
	N	433575	357163	363060
	Std. Deviation	22.623	10645.923	9750.968
	Median	39.00	4600.00	13000.00
	Minimum	0	-6000	-6000
	Maximum	94	70000	70800
Not in Poverty (over 201%)	Mean	40.55	22781.10	28559.22
	N	980656	832706	843422
	Std. Deviation	21.263	31473.094	33858.923
	Median	41.00	15400.00	22200.00
	Minimum	0	-5300	-5700
	Maximum	94	334000	573000
Total	Mean	37.76	9426.10	12902.59
	N	3679692	2905558	2960121
	Std. Deviation	22.984	19837.910	21550.760
	Median	37.00	0.00	7200.00
	Minimum	0	-9999	-19998
	Maximum	94	334000	573000

Public Assistance Income * Poverty Level Crosstabulation

% within Public Assistance Income							
		Poverty Level					Total
		Below 50%	In Poverty (51-100%)	Near Poverty (101-150%)	Low Income (151-200%)	Not in Poverty (over 201%)	
Public Assistance Income	Not in Public Assistance	21.6%	19.7%	17.0%	12.5%	29.2%	100.0%
	In Public Assistance	49.3%	26.5%	11.7%	5.7%	6.8%	100.0%
Total		22.5%	19.9%	16.8%	12.3%	28.5%	100.0%

Data for Population Ages 16-64

Poverty Level					
		Frequency	Percent	Valid Percent	Cumulative Percent
Valid	Below 50%	526225	23.2	23.4	23.4
	In Poverty (51-100%)	418242	18.4	18.6	42.0
	Near Poverty (101-150%)	356684	15.7	15.8	57.8
	Low Income (151-200%)	273742	12.1	12.2	70.0
	Not in Poverty (over 201%)	676189	29.8	30.0	100.0
	Total	2251082	99.1	100.0	
Missing	System	20467	.9		
Total		2271549	100.0		

Presence and age of own children * Poverty Level Crosstabulation

% within Presence and age of own children							
		Poverty Level					Total
		Below 50%	In Poverty (51-100%)	Near Poverty (101-150%)	Low Income (151-200%)	Not in Poverty (over 201%)	
Presence and age of own children		20.7%	18.9%	16.5%	12.4%	31.5%	100.0%
	With own children under 6 years only	32.8%	17.4%	13.9%	11.6%	24.2%	100.0%
	With own children 6 to 17 years only	28.2%	19.2%	15.9%	12.1%	24.6%	100.0%
	With own children under 6 years and 6 to 17 years	40.5%	19.0%	14.3%	9.6%	16.6%	100.0%
	No own children	22.9%	18.0%	15.3%	12.1%	31.7%	100.0%
Total		23.4%	18.6%	15.8%	12.2%	30.0%	100.0%

Marital status * Poverty Level Crosstabulation

% within Marital status							
		Poverty Level					Total
		Below 50%	In Poverty (51-100%)	Near Poverty (101-150%)	Low Income (151-200%)	Not in Poverty (over 201%)	
Marital status	Married	14.5%	17.1%	16.0%	13.5%	38.9%	100.0%
	Widowed	28.3%	24.2%	16.9%	10.4%	20.1%	100.0%
	Divorced	24.7%	19.3%	16.5%	12.0%	27.5%	100.0%
	Separated	33.9%	20.4%	16.7%	9.9%	19.1%	100.0%
	Never married or under 15 years old	30.3%	19.3%	15.3%	11.2%	23.9%	100.0%
Total		23.4%	18.6%	15.8%	12.2%	30.0%	100.0%

Educational attainment * Poverty Level Crosstabulation

		Poverty Level					Total
		Below 50%	In Poverty (51-100%)	Near Poverty (101-150%)	Low Income (151-200%)	Not in Poverty (over 201%)	
Educational attainment	No schooling completed	38.2%	26.6%	13.8%	9.2%	12.1%	100.0%
	Nursery school-preschool	23.5%	21.6%	31.1%	14.7%	9.0%	100.0%
	Kindergarten	40.5%	32.6%	2.2%	13.1%	11.6%	100.0%
	Grade 1	57.5%	21.6%	11.4%	6.7%	2.7%	100.0%
	Grade 2	51.3%	26.2%	12.0%	5.5%	5.1%	100.0%
	Grade 3	45.6%	26.0%	17.1%	6.0%	5.4%	100.0%
	Grade 4	35.3%	26.7%	16.3%	9.7%	12.0%	100.0%
	Grade 5	45.2%	26.7%	16.1%	6.3%	5.8%	100.0%
	Grade 6	42.1%	29.1%	14.2%	7.4%	7.2%	100.0%
	Grade 7	47.2%	25.6%	15.1%	6.4%	5.7%	100.0%
	Grade 8	44.3%	25.4%	14.9%	7.1%	8.3%	100.0%
	Grade 9	43.5%	25.3%	14.0%	8.2%	9.0%	100.0%
	Grade 10	46.3%	24.6%	14.5%	6.7%	7.8%	100.0%
	Grade 11	43.8%	23.6%	15.0%	7.6%	10.0%	100.0%
	12th grade-no diploma	35.1%	23.3%	17.1%	10.6%	13.9%	100.0%
	Regular high school diploma	26.6%	22.8%	18.6%	12.6%	19.5%	100.0%
	GED or alternative credential	34.8%	22.7%	17.0%	9.7%	15.9%	100.0%
	Some college-less than 1 year	24.5%	20.8%	16.9%	12.6%	25.1%	100.0%
	1 or more yr college, no degree	19.6%	18.0%	17.6%	14.5%	30.3%	100.0%
	Associates degree	15.1%	17.3%	18.6%	15.2%	33.8%	100.0%
	Bachelors degree	7.1%	8.9%	12.6%	14.3%	57.1%	100.0%
	Masters degree	3.4%	4.2%	8.1%	11.4%	72.9%	100.0%
	Professional degree	3.3%	4.1%	4.1%	5.8%	82.7%	100.0%
	Doctorate degree	3.3%	4.2%	5.5%	5.2%	81.8%	100.0%
Total		23.4%	18.6%	15.8%	12.2%	30.0%	100.0%

Employment Status Recode * Poverty Level Crosstabulation

% within Employment Status Recode							
		Poverty Level					Total
		Below 50%	In Poverty (51-100%)	Near Poverty (101-150%)	Low Income (151-200%)	Not in Poverty (over 201%)	
Employment Status Recode	Civilian employed, at work	7.4%	14.4%	17.6%	15.9%	44.7%	100.0%
	Civilian employed, with a job but not at work	7.7%	15.9%	17.3%	14.7%	44.4%	100.0%
	Unemployed	44.8%	22.4%	13.0%	7.7%	12.1%	100.0%
	Armed forces, at work	.8%	7.3%	5.8%	13.0%	73.1%	100.0%
	Armed forces, with a job but not at work				100.0%		100.0%
	Not in labor force	36.8%	22.4%	14.5%	9.0%	17.3%	100.0%
Total		23.4%	18.6%	15.8%	12.2%	30.0%	100.0%

Class of worker * Poverty Level Crosstabulation

% within Class of worker							
		Poverty Level					Total
		Below 50%	In Poverty (51-100%)	Near Poverty (101-150%)	Low Income (151-200%)	Not in Poverty (over 201%)	
Class of worker		38.5%	23.1%	14.3%	8.7%	15.5%	100.0%
	Employee of a private for-profit company or business, or of an individual, for wages,salary, or commissions	14.0%	18.0%	18.4%	14.4%	35.2%	100.0%
	Employee of a private not-for-profit, tax-exempt, or charitable organization	10.6%	13.8%	16.5%	16.0%	43.1%	100.0%
	Local government employee	10.5%	17.5%	20.4%	16.1%	35.4%	100.0%
	State government employee	4.2%	7.5%	13.3%	17.6%	57.5%	100.0%
	Federal government employee	6.8%	8.2%	11.2%	11.9%	61.9%	100.0%
	Self-employed in own not incorporated business, professional practice, or farm	25.3%	20.0%	14.8%	10.2%	29.7%	100.0%
	Self-employed in own incorporated business, professional practice or farm	12.2%	12.7%	15.7%	9.7%	49.7%	100.0%
	Working without pay in family business or farm	14.9%	10.1%	30.2%	12.6%	32.2%	100.0%
	Unemployed and last worked 5 years ago or earlier or never worked	55.6%	20.1%	10.0%	5.5%	8.7%	100.0%
Total		23.4%	18.6%	15.8%	12.2%	30.0%	100.0%

When last worked * Poverty Level Crosstabulation							
% within When last worked							
		Poverty Level					Total
		Below 50%	In Poverty (51-100%)	Near Poverty (101-150%)	Low Income (151-200%)	Not in Poverty (over 201%)	
When last worked	Within the past 12 months	8.9%	15.3%	17.6%	15.4%	42.8%	100.0%
	1-5 years ago	37.7%	20.5%	14.2%	8.9%	18.7%	100.0%
	Over 5 years ago or never worked	40.4%	22.8%	13.8%	8.3%	14.7%	100.0%
Total		23.4%	18.6%	15.8%	12.2%	30.0%	100.0%

Weeks worked past 12 months * Poverty Level Crosstabulation							
% within Weeks worked past 12 months							
		Poverty Level					Total
		Below 50%	In Poverty (51-100%)	Near Poverty (101-150%)	Low Income (151-200%)	Not in Poverty (over 201%)	
Weeks worked past 12 months		39.9%	22.4%	13.9%	8.4%	15.4%	100.0%
	50 to 52 weeks	4.4%	13.4%	17.9%	16.6%	47.8%	100.0%
	48 to 49 weeks	8.1%	15.4%	20.4%	17.4%	38.7%	100.0%
	40 to 47 weeks	12.4%	23.0%	20.1%	11.9%	32.6%	100.0%
	27 to 39 weeks	19.6%	25.8%	18.4%	12.9%	23.3%	100.0%
	14 to 26 weeks	29.4%	23.2%	15.1%	10.8%	21.4%	100.0%
	13 weeks or less	37.5%	20.6%	13.7%	8.6%	19.7%	100.0%
Total		23.4%	18.6%	15.8%	12.2%	30.0%	100.0%

Citizenship * Poverty Level Crosstabulation

% within Citizenship							
		Poverty Level					Total
		Below 50%	In Poverty (51-100%)	Near Poverty (101-150%)	Low Income (151-200%)	Not in Poverty (over 201%)	
Citizenship	Born in the U.S	20.2%	17.1%	16.1%	13.0%	33.6%	100.0%
	Born in Puerto Rico, Guam, the U.S. Virgin Islands, or the Northern Marianas	23.8%	18.7%	15.8%	12.1%	29.6%	100.0%
	Born abroad of American parents	12.8%	10.8%	16.8%	11.2%	48.4%	100.0%
	U.S. citizen by naturalization	8.9%	15.9%	13.0%	12.6%	49.6%	100.0%
	not a citizen	24.8%	19.4%	19.1%	13.6%	23.1%	100.0%
Total		23.4%	18.6%	15.8%	12.2%	30.0%	100.0%

Mobility status * Poverty Level Crosstabulation

% within Mobility status							
		Poverty Level					Total
		Below 50%	In Poverty (51-100%)	Near Poverty (101-150%)	Low Income (151-200%)	Not in Poverty (over 201%)	
Mobility status	Yes, same house-nonmovers	22.7%	18.5%	15.9%	12.3%	30.6%	100.0%
	No, outside US and Puerto Rico	31.4%	17.1%	11.4%	9.0%	31.1%	100.0%
	No, different house in US or Puerto Rico	31.4%	19.3%	15.6%	10.7%	23.1%	100.0%
Total		23.4%	18.6%	15.8%	12.2%	30.0%	100.0%

Public Assistance Income * Poverty Level Crosstabulation							
% within Public Assistance Income							
		Poverty Level					Total
		Below 50%	In Poverty (51-100%)	Near Poverty (101-150%)	Low Income (151-200%)	Not in Poverty (over 201%)	
Public Assistance Income	Not in Public Assistance	22.4%	18.4%	16.0%	12.4%	30.8%	100.0%
	In Public Assistance	54.0%	24.6%	10.4%	5.1%	5.9%	100.0%
Total		23.4%	18.6%	15.8%	12.2%	30.0%	100.0%

Disclaimer

The views expressed in this website do not necessarily reflect the views or policies of the Office of Planning, Research and Evaluation, the Administration for Children and Families, or the U.S. Department of Health and Human Services.